

THE
ENTOMOLOGICAL MAGAZINE

VOL. III. PT. ~~3~~ 3-4

昆蟲學雜誌

第參卷 第參四號

大正八年

三月



PUBLISHED BY
THE ENTOMOLOGICAL SOCIETY OF JAPAN.

% NANAZONO ENTOMOLOGICAL LABORATORY,
TANIGUCHI, HANAZONO,
KYOTO, JAPAN.

MARCH, 1919

Price Yen 0.5

會 則

- 第壹條 本會を稱して大日本昆蟲學會と云ふ
- 第貳條 本會はその事務所を當分の内
京都府葛野郡花園村谷口 花園昆蟲研究所に置く
- 第參條 本會は昆蟲學の發達普及を圖るを以て目的とす
- 第四條 本會はその目的を達する爲め次の諸事業を行ふ
- 一 年四回昆蟲學雜誌を發行す
 - 二 毎年隨時數回の集會を行ふ
 - 三 其他臨時出版物等を刊行す
- 第五條 本會は役員を置かず只本會々務一切を取扱ふ爲、數名の
委員をおく、委員は會員中事務を扱ふに最も便宜あるもの
のこれに當る
- 第六條 本會々員は會費毎年壹圓を前納するものとす、本會々員
は、本誌の配布を受け、集會に列し、及び本誌に寄稿する等の
權利を有す、本會に入會せんとするものは會費壹ヶ年分を添へ
直接事務所に申込まるべし
- 第七條 本會則外の特發の事件は委員合議の上適當の所置をとる

寄 稿 注 意

1. 會員の原稿は各關受可申候、會員外のものには會員の紹介ある時之を受くる事可有之候
2. 原稿は到着順に登載す。全文到着せざるもの、昆虫學以外に論及せるもの、人身攻撃に渉れるもの、及編輯者に於て不當と認めたるものは登載致さず候
3. 登載せる原稿は返戻せず。但し圖版原稿は希望により返戻すべく候
4. 原稿は三十字詰として、横に左より書かれたし。平假名を用ひ外國名は總て原語を以て認められたく、論說には歐文の標題をも附せられ度候。又歐文摘要附加は望ましき事に有之候
5. 圖版及挿圖は墨汁にて認め、挿圖は一箇所に集中せられ度候
6. 原稿には必ず氏名を明記せられ度候
7. 外國文の原稿にはこれに該當する日本文又はその摘要を添へられ度候
8. 論說に限り抜刷を出す、二十五部まで其費用當方に負擔す、それ以上は實費申受候
9. 寄稿宛名は次の如くに候

京都府愛宕郡一乘寺村

野平安藝雄宛

CONTENTS

論 說

- | | |
|---|---|
| <p>1. 小態捍一蜻蛉複眼の組織學的
研究..... 101</p> <p>2. ALEXANDER, C.P.—日本産ガン
ボの新種..... 122</p> <p>3. 松村松年, 足立仁郎—日本産
有用食蚜蠅科の分類 (IV) 128</p> <p>4. 瀧澤眞澄—日本産未記録の瓢
虫..... 145</p> <p>5. 松村松年—新に臺灣にて得ら
れたる蝶類..... 146</p> <p>6. 杉谷岩彦—本邦産蝶類の異常
形に就きて(補遺) 150</p> <p>7. 野平安藝雄—フジミドリシ
ミに就きて..... 152</p> | <p>1. OGUMA, K. —A histological
Study on Compound Eyes of
Dragon-flies101</p> <p>2. ALEXANDER, C. P.—New or
little known Craneflies from
Japan122</p> <p>3. MATSUMURA, S., ADACHI, J.
—Synopsis of the economic
Syrphidae of Japan(IV) 128</p> <p>4. TAKIZAWA, M.—An unrecord
ed Species of Coccinellidae
from Japan.....145</p> <p>5. MATSUTURA, S.—Some But
terflies newly collected in For
mosa146</p> <p>6. SUGITANI, I.—On some aber
rant Forms of Japanese But
terflies (Supplement)150</p> <p>7. NOHIRA, A, —On Zephyrus
fujisanus MATSUMURA. ...152</p> |
|---|---|

抄 録

- 蝶に見る擬態(Punnet, R. C.)..... 155

雑 録

- 本邦産 *Zephyrus* 雑記.....野平安藝雄..... 207
- 更に北海道産蝶類の數種に就きて 同 上..... 215

雑 報

- 採集彙報(220) 會員動靜(221) 東京昆蟲學會(222) 新著紹介(222)
- 會 報(228) 交 換() 附 録(卷末)

SYNOPSIS OF THE ECONOMIC SYRPHIDAE OF JAPAN (Pt. III).

BY

Prof. S. MATSUMURA, F.E.S. JAP.

and J. ADACHI, F.E.S. JAP.

Ischiodon SACK.

SACK—Ent. Mitteil. 11. p.5 (1913).

Body as that of *Syrphus*, with a narrow, lineal abdomen. Thorax above on the lateral sides with yellow stripes and beneath with some yellowish spots. Hind trochanter of the male with a conical projection. Abdomen nearly as that of *Episyrphus cinctellus* ZETT.

Genotype—*Ischiodon trochanterica* SACK.

1. *Ischiodon boninensis* MATS. (n. sp.) Pl. I, fig. 1, o.

♀ Aeneous black, with very short yellowish hairs. Face pale yellow, with very short whitish hairs. Vertex black, in the middle of the front with a narrow black stripe, which becoming broader towards the antennal basis. Antennae orangeyellow, the 1st and 2nd joints on the backs somewhat infuscated. Proboscis dark brown, at the apex yellowish brown. Thorax on each lateral side with a pale yellowish longitudinal stripe, which not reaching to the scutellum yellow, in the middle with a fuscous spot, yellowish pubescent. Wings hyaline, veins brown to fuscous, stigma fulvous.

Calypteres whitish, halteres yellowish. Meso- and sternopleura grayish white, with some silvers. Abdomen with 3 yellowish bands, that of the 2nd joint being narrowly interrupted, the hind margins of the 3rd, 4th 5th segments narrowly yellow, the 4th on each side with a triangular yellow spot; venter yellowish, the 2nd, 3rd and 4th segments each with a black transverse spot, covered with a few short fuscous and yellowish hairs. Legs yellow, coxae, the middle part of the hind tibia and a spot near the tip of the hind femur, fuscous.

Length—10 mm.

Hab.—Bonin Islands (Ogasawarajima), one female specimen collected by Prof. S. MATSUMURA at Chichijima (20, VIII, 1905).

Nom. Jap.—**Toge-hirataabu**.

Hiratana MATS. (n. g.)

Much resembles **Melanostoma** SCHIN., but differs from it in the following points:

Antennae longer, the 3rd joint broader, twice as long as the 1st and 2nd taken together, arista near the base, nearly at one third part of the whole-length, naked. The touched portion of the compound eyes of the male much longer than the vertex, vertex long triangular, the upper ocellus much separated from the lower ones, while in **Melanostoma** being situated in equilateral. Wings much longer than the abdomen and broader, venation more resembles that of the **Syrphus**, 1st and 2nd posterior cells being in the same level at the margin. Abdomen in both sexes oblong, broader than the thorax, very flat. Legs moderate, the hind legs being much longer than the intermediate pair. The behavior is the same as **Melanostoma** SCHIN., and it may most probably be aphidivorous.

Genotype—**Hiratana 4-guttula** MATS.

1. **Hiratana 4-guttula** MATS. (Pl. L. fig. 15 ♀).

Journ. Coll. Agr. Sapporo, vol. IV, **Syrphus 4-guttulus** MATS. p. 79, 1911.

♂ Aeneous, with a bluish tinge. Face black, grayish pruinous, except the middle tubercle, with pale yellowish hairs; vertical triangle shining, above with fuscous hairs; antennae brownish, the 3rd joint beneath and the lower parts of the following joints, yellowish, arolium yellowish, at the apex scarcely infuscated; antennal-process at the margin yellowish. Proboscis brownish. Thorax and scutellum pale yellowish pubescent. Wings hyaline, scarcely infuscated, veins fuscous, stigma fulvous. Calypteres grayish, at the margin yellowish, halteres pale fulvous, its head being somewhat

infuscated. Abdomen black, at the base somewhat grayish pruinous, the 2nd segment with a small orange spot on each side, the 3rd and 4th each with a broad orange band, which being deeply incised at the hind margin and touching the lateral margins on its base, with yellowish and black hairs. Venter nearly the same as above, but more yellowish. Legs yellowish brown, coxae, basal parts of the anterior and middle legs, yellow, the posterior legs, except the apices of the femora and the bases of the tibiae, mostly brownish.

♀. Differs from the male as follow:

Vertex with a bluish tinge, a space between the vertex and front grayish pruinous, hairs of the face being mostly whitish. Antennae more yellowish. Abdomen dark brown, the 3rd and 4th segments each with 2 orange spots at the base, the lower pair being somewhat smaller.

Length—♂ ♀ 10—12 mm.

Hab.—Saghalien (Galkinowraskoe, Shiska), Hokkaido (Sapporo, Chitose), Honshu (Nikko), collected by the authors and Mr. S. ISSHIKI.

Nom. Jap.—**Yotsuboshi-tsuayahirataabu.**

Melanostoma SCHIN.

SCHINER—Wien. Ent. Monat. IV, P. 213 (1860).

Head hemispherical, as broad as or somewhat broader than the thorax. Antennae shorter than the head, porrect, the 3rd joint oval, or oblong, as long as or scarcely longer than the 1st and 2nd taken together; arista very fine pubescent, standing on its back. Rostrum somewhat protuded, with a broad sucking surface. Palpi wedge-shaped, small. Face quite broad, in the middle with a small tubercle, bare, always with a black or black aeneous metallic luster, often pale pruinous, but never yellowish. Compound eyes bare, in the male holoptic, in the female widely dichoptic. Humeral triangle not projected. Thorax quadrate, with rounded angles. Humerus and the lateral sides of the thorax never yellowish. Scutellum concolorous with the thorax. Abdomen lineal, elongated, rarely oblong in the female. Legs simple. Wings quite large,

surpassing the tip of the abdomen, at rest placing parallel with the body; the 3rd longitudinal vein straight, first posterior cell with an anterior acute angle. Calyptres small, but distinct. Metamorphosis of these insects are not yet well known, but they are most probably aphidivorous as **Syrphus**. They are common on some flowers of umbelliferous plants, especially in the swampy meadow, and their behaviors being nearly the same as **Syrphus**.

Genotype—**Melanostoma hyalinata** FALL.

Table of species.

1. Abdomen with spots... ..	2
—Abdomen without spots	inornatum n. sp.
2. Abdomen with bluish spots	urakawense n. sp.
—Abdomen with yellowish spots	3
3. Antennae black or brown	4
—Antennae yellowish, atmost the 3rd joint on its apex fuscous.	7
4. Abdomen with 3 pairs of spots	5
—Abdomen with 4 pairs of spots	6
5. The 2nd, and 4th abdominal segments with spots	
... ..	elongatum n. sp.
—The 3rd, 4th and 5th abdominal segments with spots	
... ..	motodomariense n. sp.
6. Abdominal spots nearly of equal size, all touching the lateral sides	mellinum L.
—The first pair of the abdominal spots very small, only the last 2 pairs touching the lateral sides	tenuis n. sp.
7. Abdominal spots longer than wide	8
—Abdominal spots wider than long	11
8. Abdomen with 3 pairs of spots	teizonis n. sp.
—Abdomen with 4 pairs of spots	9
9. Abdomen as broad as the thorax	ochiaianum n. sp.
—Abdomen distinctly broader than the thorax	10
10. The 2nd and 3rd spots triangular... ..	orientale Wied.
—The 2nd and 3rd spots oblong, at the base being truncated	ogasawarae n. sp.

11. Abdomen with 3 pairs of spots **flavipenne** n. sp.
 —Abdomen with 4 pairs of spots 12
12. The interrupted space between the 2nd and 3rd spots
 triangular **interruptum** n. sp.
 —The interrupted space between the 2nd and 3rd spots rec-
 tangular 13
13. All the abdominal spots touching the lateral sides
 **sachalinense** n. sp.
 —All the abdominal spots (except the last pair) not touching
 the lateral margin **otaniense** n. sp.

1. **Melanostoma inornatum** M TSA. (n. sp.) Pl. L, fig. 9, ♀.

♀. Aeneous black, with a bluish tinge. Face grayish pruinous, with grayish hairs; front and vertex fulvous pubescent. Antennae yellowish, the 3rd joint on its back and at the apex fuscous, arista brownish. Thorax and scutellum pale fulvous pubescent. Wings hyaline, with a light fulvous tinge, veins mostly brown, those of the base and costa being yellowish, stigma fulvous. Calypteres grayish, halteres yellow, at the base somewhat infuscated. Abdomen scarcely broader than the thorax, without yellowish spots, fulvous short pubescent. Venter fuscous, on the lateral sides yellowish. Legs yellowish, coxae, except the middle ones, middle part of the hind tibia, as well as the apical part of the same tarsus, fuscous.

Length—6 mm.

Hab.—Hokkaido (sapro); 2 female specimens collected by Prof. S. MATSUMURA.

Nom. Jap.—**Mumon-tsuahirataabu**.

2. **Melanostoma urakawense** MATS. (n. sp.) Pl. I, fig. 7, ♀.

♀. Shining black, with a bluish tinge. Face grayish pruinous, with short grayish hairs; front and vertex fuscous pubescent. Antennas brownish, the 3rd joint beneath yellowish. Thorax and scutellum pale fulvous pubescent. Wings hyaline, with a fulvous tinge, at the basal third somewhat paler, veins brownish, stigma fulvous. Calypteres grayish, halteres yellow. Abdomen nearly as

broad as the thorax, on the side nearly parallel with 3 pairs of bluish-white spots, those of the 2nd segment smaller, transverse, nearly in the middle of the segment, those of the 3rd and 4th segments somewhat rhomboidal, not touching the lateral sides. Venter fuscous, the hind margin each segments fulvous. Legs brownish yellow, coxae, trochanter, apical halves of the anterior and middle tibiae, larger part of the tarsi, as well as the larger part of the hind legs, except both ends of the femur and the basal of the tibia, fuscous.

Length—8 mm.

Hab.—Hokkaido (Sapporo, Hidaka); one female specimen collected by Mr. MASATO ISHIDA, and another female one by Prof. S. MATSUMURA.

Nom. Jap.—**Ruriboshi-tsuyahirataabu.**

3. **Melanostoma elongatum** MATS. (n. sp.) Pl. I, fig. 8, ♀.

♀ Aeneous black. Face plumbeous pruinous, with short whitish hairs; front and vertex fuscous pubescent. Antennae black, the 3rd joint and arista brownish. Thorax and scutellum pale fulvous pubescent. Wings hyaline, with a fulvous tinge, veins brown, stigma fulvous. Calypteres grayish white, halteres orange-yellow. Abdomen black, nearly as broad as and $2\frac{1}{2}$ times as long as the thorax, with 3 pairs of reddish yellow spots, those of the 2nd segment being smaller and nearly in the middle, those of the 3rd segment nearly of a quadrate form, somewhat longer than wide, those of the 4th segment nearly of one half size of the proceeding, broader than wide, with the proceeding touching the lateral margins. Venter fuscous, with yellowish spots. Legs yellowish, coxae, trochanter, the hind femur, except both ends, and a middle spot of the same tibia, as well as the larger part of the same metatarsus, fuscous.

Length—8 mm.

Hab.—Saghalien (Toyohara); one female specimen collected by Messrs. J. ADACHI and S. ISSHIKI.

Nom. Jap.—**Naga-tsuyahirataabu.**

4. **Melanostoma motodomariense** MATS.

(n. sp.) Pl. I, fig. 4, ♀.

Black, with an indigo luster. Face grayish pruinous, with whitish hairs; vertex and front short black pubescent. Antennae black, the 3rd joint and arista brown. Thorax and scutellum pale fulvous pubescent. Wings hyaline, with a fulvous tinge, especially in the middle, stigma fulvous, veins brown. Calypteres whitish, halteres citron-yellow. Abdomen black, scarcely broader than the thorax, nearly twice as long as the thorax with 3 pairs of yellowish spots, those of the 3rd and 4th segments being quadrate, somewhat rounded at the inner sides of the 5th smaller and at the lateral sides much broader. Venter fuscous, with yellowish spots as above, grayish pubescent. Legs yellow, coxae, trochanter, and the hind legs (except both ends of the femur and tibia, as well as the middle part of the tarsus), fuscous.

Length—8.5 mm.

Hab.—Saghalien (Toyohara); one female specimen collected by Messrs J. ADACHI and S. ISSHIKI.

Nom. Jap.—**Motodomari-tsuyahirataabu.**

5. **Melanostoma mellinum** L. Pl. I, fig. 14, ♀.

Musca mellina L. Fauv. Su c. P. 1821 (1761).

Syrphus mellarius MEIG. Syst. Besch. vol. III,
P. 328 (1822).

Syrphus melliturgus MEIG. Syst. Besch. vol. III,
P. 329 (1822).

Melanostoma mellina SCHIN. Faun. Austr. vol. I.
P. 292 (1862); COQUILLET.

Proc. Nat. Mus. U.S.A. vol. XXI, P. 321 (1898);
MATSUMURA—Thous. Ins. Jap. vol. II, P. 91, Pl.
fig. 9, ♀ (1904).

♂. Aeneous black. Face black, not shining, face grayish pruinous, with whitish hairs; front with dark brown and vertex with yellowish brown hairs. Antennae dark brown, arista somewhat paler. Proboscis shining black, at the apex yellowish brown. Thorax and scutellum with pale fulvous hairs, at the humerus somewhat grayish pruinous. Wings hyaline, scarcely infuscated,

veins fuscous. Stigma fulvous. Calypteres pale yellowish. Halteres yellowish, at the base of the stalk somewhat infuscated. Abdomen nearly as broad as the thorax, with 4 pairs of orange spots, all (except the first pair) touching the lateral sides, with pale yellowish hairs; venter paler, but marked nearly the same as above. Legs yellowish, coxae, trochanter, middle part of the femur and tibia, as well as metatarsus of the hind legs, fuscous.

♀. Differs from the male as follows:

Vertex, front, and facial tubercle shining. Abdominal spots much dilated at the lateral margins and the last spots being much larger.

Length—♂ ♀ 8—9 mm.

Hab.—Hokkaido (common), Honshu (Gifu, Tokyo).

Nom. Jap.—**Sesuji-tsuyahiratabu**.

6. *Melanostomatenuis* MATS. (n. sp.)

♀. Black, with an indigo tinge. Face silver gray pruinous, fine grayish pubescent; front and vertex pale yellowish pubescent. Antennae black, the 3rd joint and arista yellowish brown. Proboscis brownish. Thorax and scutellum fine pale fulvous pubescent. Wings hyaline, with a pale fulvous tinge, veins brown, stigma fulvous. Calypteres whitish, halteres pale yellowish. Abdomen black, scarcely broader than the thorax, with pairs of yellowish spots, those of the 2nd segment being very small and situated nearly in the middle, those of the 3rd and 4th segments nearly of a quadrate form, somewhat narrower at the inner sides, those of the 5th being smaller and distinct only at the lateral sides, the last 2 pairs only touching the lateral sides. Venter black, on the sides with yellowish spots.

Legs yellow, coxae, trochanter, the hind legs, except both ends of the femur and tibia, as well as the middle part of the tarsus, fuscous.

Length—6 mm.

Hab.—Saghalien (Toyohara); one female specimen collected by Messrs J. ADACHI and S. ISSHIKI

Nom. Jap.—**Hoso-tsuyahiratabu**.

7. *Melanostoma teizonis* MATS. (n. sp.)

♀. Shining black, with an aeneous tinge. Face grayish pruinous, with whitish, front with brownish hairs. Antennae yellow, the 3rd joint on its back infuscated, arista yellowish. Thorax and scutellum pale fulvous pubescent. Wings hyaline, with a fulvous tinge, veins brown, stigma fulvous. Calypteres pale testaceous, halteres yellowish. Abdomen much broader than the thorax, with 3 pairs of yellowish spots, those of the 3rd and 4th segments being oblong and situated nearly in the middle longitudinally, those of the 5th segment transverse, broader at the inner sides and touching the lateral sides. Venter fuscous, the hind margins and lateral sides yellowish. Legs yellow, coxae, the middle part of the hind tibia and the tip of the same tarsus, fuscous.

Length—7 mm.

Hab.—Honshu (Iwate); one female specimen collected by Mr. TEIZO OGASAWARA.

Nom. Jap.—**Teizo-tsuyahirataabu.**

8. *Melanostoma ochiaianum* MATS.

(n. sp.) Pl. I, fig. 12, ♀

Somewhat resembles *M. orientale* WIED., but differs from the latter in the following points:

♀. Abdomen nearly as broad as the thorax, at the joint of the 2nd and 3rd segments being the broadest, the first spots oblong, the 2nd and 3rd spots conical, not incurved at the outer side, while the 3rd spots being somewhat incurved at the inner side, the 4th spots semicircular, the spots of the 2nd and 3rd segments not touching the lateral sides. Venter fuscous, with yellowish spots, the 4th segment yellow, with a fuscous stripe.

Length—7 mm.

Hab.—Saghalien (Ochiai); one female specimen collected by Messrs J. ADACHI and S. ISSHIKI.

Nom. Jap.—**Ochiai-tsuyahirataabu.**

9. *Melanostoma orientale* WIED.

Syrphus orientalis WIED. Auss. Zweifl. vol. II, P. 139, (1830).

♂. Aeneous black. Face grayish pruinous, pale yellowish pubescent, front with brownish hairs; proboscis fuscous; antennae yellow, the 3rd joint on its apex fuscous, the 1st joint brownish, arista yellowish, at the apex scarcely infuscated. Thorax and scutellum pale fulvous pubescent; wings hyaline, scarcely infuscated, veins fuscous, stigma fulvous. Calypteres testaceous, halteres orange-yellow. Abdomen black, with 3 pairs of yellowish quadrate spots, one pair of which at the 2nd segment being smaller and not touching the lateral margins; venter paler, but similarly marked as above, pale yellowish pubescent. Legs yellow, middle part of the hind tibia, as well as the tip of the hind tarsus, fuscous.

♀ Differs from the male in the following points:

Vertex and front shining black, with an indigo luster, on the sides grayish pruinous. Abdomen somewhat broader than the thorax, with 4 pairs of yellowish spots, those of the 2nd segment being smaller and generally of an oblong form, those of the 3rd and 4th inversed triangular, that of the 5th transverse and at the lateral sides somewhat broader; markings of the venter are not constant, sometimes with a black longitudinal stripe, sometimes black, with yellowish spots, and sometimes entirely fulvous, etc.

Length—♂ ♀ 6.8—8 mm.

Hab.—Saghalien, Hokkaido, Honshu, Shikoku, Kiushu, Formosa; China, Philippines, E. India.

Nom. Jap.—**Tsuya-hirataabu.**

This is very variable species, perhaps mingling some different species (but I hesitate to make any new species), and it resembles much European **M. gracile** MEIG.

10. **Melanostoma ogasawarae** MATS. (n. sp.) Pl. I, fig. 5, ♀.

♀. Black, shining. Face grayish pruinous, with fine whitish hairs; vertex and front fuscous pubescent. Antennae yellow, the 3rd joint on its back and at the tip infuscated. Thorax and scutellum very fine pubescent. Wings hyaline, with a fulvous tinge, veins brown, stigma fulvous. Calypteres whitish, halteres fulvous, the head in the middle scarcely infuscated. Abdomen distinctly

broader than the thorax, with 4 pairs of yellowish spots, those of the 2nd, 3rd and 4th segments oblong and situated longitudinally, those of the 5th transverse, somewhat narrower at the inner sides, those of the 2nd and 3rd pairs being widely separated from the lateral margins. Venter black, spots-series, the hind margins and lateral sides, yellowish. Legs yellowish, coxae, middle part of the hind tibia and tip of the same tarsus, infuscated.

Length—7.5 mm.

Hab.—Honshu (Iwate); 2 female specimens collected by Mr. TEIZO OGASAWARA.

Nom. Jap.—**Ogasawara-tsuyahirataabu.**

11. **Melanostoma flavipenne** MATS. (n. sp.) Pl. I, fig. 2, ♀.

♀ Aeneous black. Face pale fulvous pubescent; vertex and front brownish pubescent; antennae yellow, the 3rd joint on its back and at the apex scarcely infuscated, arista yellow, on its apical half brownish. Thorax and scutellum short fulvous pubescent. Wings hyaline, with a fulvous tinge, veins yellowish brown, stigma fulvous. Calypteres whitish, halteres yellowish brown, the stalk being yellowish. Abdomen distinctly broader than the thorax, the 2nd segment on each lateral side with a small yellow spot, which touching the lateral margin, the 3rd, 4th and 5th segments each with a transverse yellow spot, those of the first 2 segments becoming broader towards the middle and truncated, while those of the last segment becoming narrower towards the middle. Legs yellowish, a middle spot of the hind tibia fuscous.

Length—7.5 mm.

Hab.—Honshu (Kyoto); one female specimen collected by Mr. M. SUZUKI.

Nom. Jap.—**Kibane-tsuyahirataabu.**

12. **Melanostoma interruptum** MATS. (n. sp.) Pl. I, fig. 6, ♀.

Head and thorax aeneous black, with a bluish tinge. Face only on the sides grayish pruinous, with whitish hairs; vertex and front brownish pubescent. Antennae yellowish, the 3rd joint on its back and at the tip somewhat infuscated. Thorax and scutellum

fulvous pubescent. Wings hyaline, with a light fulvous tinge. Calypteres whitish, halteres citron-yellow. Abdomen scarcely broader than the thorax, its sides nearly parallel throughout, with 4 pairs of yellowish spots, those of the 2nd segment smaller, triangular, touching the lateral sides, those of the 3rd and 4th segments transverse, obliquely truncated at the inner sides and each building a triangle in the intermediate space, those of the 5th segment contiguous or nearly contiguous, being triangularly incised at the middle. Venter nearly marked the same as above, but paler. Legs yellow, coxae and the middle part of the hind femur, somewhat infuscated.

Length—7.5 mm.

Hab.—Hokkaido (Sapporo), Honshu (Iwate); one female specimen collected by Mr. TEIZO OGASAWARA, and another female one collected by Prof. S. MATSUMURA.

Nom. Jap.—**Eguri-tsuyahirataabu.**

13. **Melanostoma sachalinense** MATS.

(n. sp.) Pl. I, fig. 10, ♀.

♀ Aeneous black. Face grayish pruinous, with a few whitish hairs; front and vertex fulvous pubescent. Antennae yellow, the 3rd joint on its back and at the apex scarcely infuscated. Thorax and scutellum pale fulvous pubescent. Wings hyaline, with a fulvous tinge, veins brown, stigma fulvous. Calypteres grayish, halteres yellowish brown. Abdomen fuscous, in the middle distinctly broader than the thorax, with 4 pairs of yellowish spots, those of the 2nd segment triangular, slightly incised at the hind margin, those of the 3rd and 4th segments each dilated at the inner side, at the hind margin distinctly incurved, those of the 5th segment very narrow at the inner sides and nearly contiguous. Venter yellowish, with fuscous marking. Legs yellow, coxae, middle part of the hind femur and tibia, somewhat infuscated.

Length—7.5 mm.

Hab.—Saghalien (Toyohara); one female specimen collected by Messrs. J. ADACHI and S. ISSHIKI.

Nom. Jap.—**Karafuto-tsuyahirataabu.**

14. **Melanostoma otaniense** MATS. (n. sp.) Pl. I, fig. 3, ♀.

♀. Aeneous black. Face grayish pruinous, with whitish hairs; front and vertex black pubescent; antennae brownish, the 3rd joint, except the back, yellow arista yellowish. Thorax and scutellum pale fulvous. Wings hyaline, scarcely infuscated, veins brown, spurious vein and stigma yellowish. Calypteres whitish, halteres yellow. Abdomen somewhat broader than the thorax, with 4 pairs of yellowish spots of the same size, the first 3 pairs being dilated at the inner side and somewhat curved downwardly, the last pair narrower at the inner side, all, except the first pair, not touching the lateral margins, and somewhat grayish pruinous. Venter entirely fulvous, in the middle somewhat infuscated. Legs yellowish, the last legs, except both ends of the femur and base of the tibia, fuscous.

Length—7.5 mm.

Hab.—Saghalien (Otani); one female specimen collected by Messrs J. ADACHI and S. ISSHIKI.

Nom. Jap.—**Otani-tsuyahirataabu**.

Stenopipiza MATS. (n. g.)

Somewhat resembles **Pipiza** FALL.

♀. Body narrow, lineal. Head somewhat broader than the thorax; oral margin somewhat beak-like projected; face black, concave; proboscis long, sucking-surface broad, palpi filiform; antennae short, the 3rd joint as long as the 1st and 2nd joints taken together, with the arista on its back, at the one third part of the whole length near the base; vertex scarcely narrower than the front between the antennae. Thorax globular, without yellowish stripes or spots; scutellum simple. Wings much longer than the abdomen, marginal cell open, first and 2nd posterior cells closed, each lacking a stump of vein, anterior close-vein distinctly before the middle of the discal cell, rectangular. Abdomen convex lineal, narrower than the thorax, with 5 visible segments, at the apex truncated, the first segment as long as the 5th, the 2nd the longest, the venter excavated. Hind femur much thickened, with numerous small teeth beneath. Behavior of this insect is not yet known, but it may be

aphidiphagous.

Genotype—*Stenopipiza bipunctata* MATS.

1. *Stenopipiza bipunctata* MATS. (n. sp.) Pl. I, fig. 11, ♀.

♀. Aeneous black. Face grayish pruinous, front with pale fulvous and vertex fulvous hairs. Proboscis brown, sucking surface yellowish brown. Antennae brownish, the 3rd joint beneath at the base yellowish. Thorax and scutellum fulvous pubescent. Wings hyaline, somewhat iridescent, scarcely infuscated, veins fuscous, stigma fulvous. Calypteres and halteres whitish. Abdomen fuscous, the 3rd joint at the base with a yellowish lateral spot; venter strongly excavated, fulvous, on the sides with a plumbeous luster. Legs yellowish coxae, trochanter and the middle parts of the femora and tibiae, fuscous, the hind femur, except both ends, aeneous black, the same tibiae in the middle and both ends of the same tarsus, fuscous.

Length—5.2 mm.

Hab—Hokkaido (Sapporo); one female specimen collected by Prof. S. MATSUMURA. (16. V, 1904).

摘 要

Gen. *Ischiodon* SACK. トゲヒラタアブ pl. 1, fig. 1, ♀.

1. オガサハラヒラタアブ

Ischiodon boninensis MATS. 小笠原島

此屬ノ特性ハ後轉節ニ圓錐形ノ突起ヲ有ス。

本邦一種アルノミ。

Gen. *Hiratana* MATS. (n.g.) オホツヤヒラタアブ屬

1. ヨツボシツヤヒラタアブ

Hiratana 4-guttula MATS. 樺太・北海道

此屬ノ特性ハ顔黑色ニシテ腹部ハ遙ニ胸部ヨリモ廣ク、頗ル扁平ナルニアリ。本邦一種アルノミ。

Gen. *Melanostoma* SCHIN. ツヤヒラタアフ屬

此屬ノ顔ハ黑色, 腹部ト胸部ハ稍同幅, 後肢ハ中肢ヨリ遙ニ長シ, 單眼ハ長三角形コ排置セラル。

本邸ニ産スルモノ左ノ十三種アリ,

1. ムモンツヤヒラタアフ
Melanostoma inornatum MATS. 北海道
2. ウラカワツヤヒラタアフ *M. urakawense* MATS. 北海道
3. ナガツヤヒラタアフ *M. elongatum* MATS. 樺太
4. モトドマリツヤヒラタアフ *M. motodomariense* MATS. 樺太
5. セスジツヤヒラタアフ *M. mellinum* L. 北海道, 本州
6. ホリツヤヒラタアフ *M. tenuis* MATS. 樺太
7. テイゾウツヤヒラタアフ *M. teizonis* MATS. 本州
8. オチアイツヤヒラタアフ *M. ochiaianum* MATS. 樺太
9. ツヤヒラタアフ *M. orientale* WIED. 樺太, 北海道
本州, 九州, 臺灣
10. キバ子ツヤヒラタアフ *M. blavipenne* MATS. 本州
11. エグリツヤヒラタアフ *M. interruptum* MATS. 北海道, 本州
12. カラフトツヤヒラタアフ *M. sachalinense* MATS. 樺太
13. オホタニツヤヒラタアフ *M. otaniense* MATS. 樺太

種ノ分類表

- | | |
|----------------------------|-------------------|
| 1. 腹部ニ紋ヲ有スルモノ | 1 |
| —腹部ニ紋ヲ有セザルモノ | <i>Inornatum</i> |
| 2. 腹部ニ藍色紋ヲ有ス | <i>Urakawense</i> |
| —腹部ニ黄色紋ヲ有ス | 3 |
| 3. 觸角黑色若クハ褐色 | 4 |
| —觸角黄色 | 7 |
| 4. 腹部ニ三双ノ紋ヲ有ス | 5 |
| —腹部ニ四双ノ紋ヲ有ス | 6 |
| 5. 第二, 第三及ビ第四腹部ニ紋アリ | <i>Elongatum</i> |

- 第三, 第四及ビ第五腹部ニ紋アリ... .. **Motodomariense**
6. 腹部ノ紋約同大ニシテ兩側ニ達ス... .. **Mellinum**
 —第一腹部ノ紋小, 終ノ二双紋ノミ兩側ニ達ス... **Tenuis**
7. 腹紋ノ幅ヨリ長キモノ 8
 —腹紋ノ長サヨリ廣キモノ... .. 11
8. 腹部ニ三双紋ヲ有ス... .. **Teizonis**
 —腹部ニ四双紋ヲ有ス... .. 9
9. 腹部ト胸部ト同幅ナルモノ **Ochiaianum**
 —腹部ハ胸部ヨリ明ニ廣キモノ... .. 10
10. 第二及ビ第三腹節紋三角形ナルモノ **Orientele**
 —第二及ビ第三腹節紋隨圓形, 基部ニテ截斷セラル
 **Ogasawarae**
11. 腹部ニ三双紋アリ **Flavipenne**
 —腹部ニ四双紋アリ 12
12. 第二及ビ第三紋間三角形ヲ呈ス **Interruptum**
 —第二及ビ第三紋間四角形ヲ呈ス 13
13. 総ノ腹紋兩側ニ達ス... .. **Sachalinense**
 —総ノ腹紋(最後紋ヲ除ク)兩側ニ達セズ... .. **Otaniense**

Gen. **Stenopipiza** MATS. (n. g.)

此ハこひらたあぶ屬ニ似タレ共体細長, 顔黑色, 胸側ニ黄條及ビ黄紋ヲ欠ク, 腹部ハ胸部ヨリモ細ク, 後腿節ハ太ク下部ニ小齒ヲ連ヌ。

1. **ハラボリヒラタアブ** *Stenopipiza bipunctata* MATS 北海道
 本邦ニ一種アルノミ。

追 加

第二卷第六版

9. **Metasyrphus Hideonis** MATS.

11. **M** **Jezoensis** MATS.

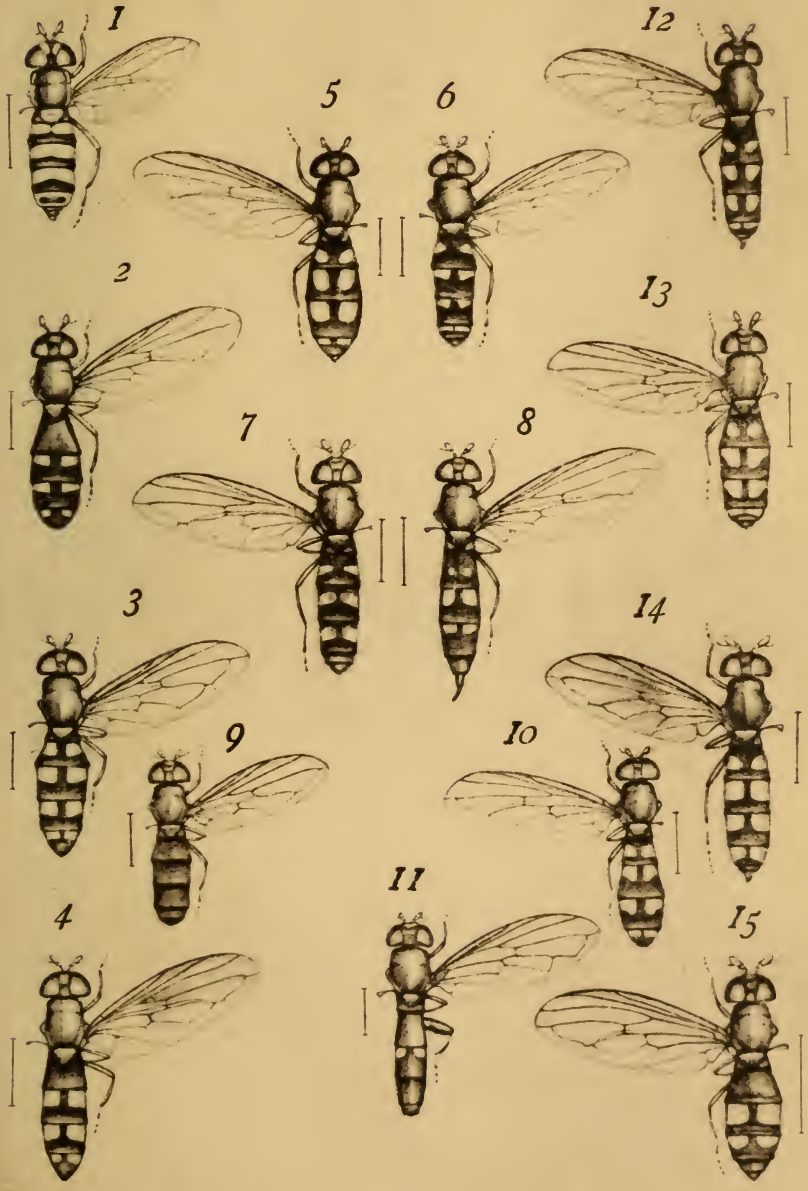
12. **M.** **Kawamurae** MATS.

以上三種ハ **M. Corollae** F.ノ變種ニ屬スベキモノニシテ其變化多キ目下變種ヲ記載セズ、他日數百ノ同種ヲ集メ確然タル不變ノ變種アルノ日ヲ待ツ。

終

Explanation of plate III 第三版説明

1. <i>Ischiodon boninensis</i> n. sp.	♀ (128)
2. <i>Melanostoma flavipennie</i> n. sp.	♀ (138)
3. <i>M. otaniense</i> n. sp.	♀ (140)
4. <i>M. motodomariense</i> n. sp.	♀ (133)
5. <i>M. Ogasawarae</i> n. sp.	♀ (137)
6. <i>M. interruptum</i> n. sp.	♀ (138)
7. <i>M. urakawense</i> n. sp.	♀ (132)
8. <i>M. elongatum</i> n. sp.	♀ (133)
9. <i>M. inornatum</i> n. sp.	♀ (132)
10. <i>M. sachalinense</i> n. sp.	♀ (139)
11. <i>Stenopipiza bipunctata</i> n. sp.	♀ (141)
12. <i>Melanostoma ochiaianum</i> n. sp.	♀ (136)
13. <i>M. orientale</i> WIED	♀ (136)
14. <i>M. mellinum</i> L.	♀ (134)
15. <i>Hiratana 4-guttula</i> MALS.	♀ (129)



T. OKUNI del.

New Species of Syrphidae from Japan.

日本産有用食蚜蠅の新種